

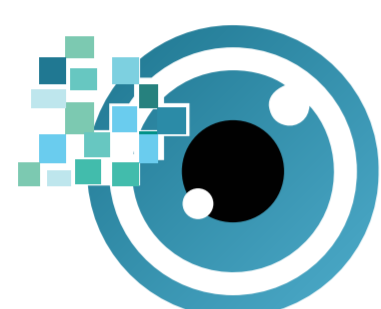
NOT TO BE MISSED!

WEBINAR INVITATION

Monday 30th November 2020

Glaucoma Masterclass Series

Session 2: Visual Fields



Tahmina Pearsall
Your sight...Our vision



Ms Tahmina Pearsall, Consultant Ophthalmologist based at Surrey and Sussex Hospital would like to invite you to her Glaucoma webinar event.
Interpretation of glaucoma related visual fields
(1 CET point)
Clinical problem-solving and case discussion

Date: 30th November 2020
Start Time: 7.30pm
Runtime: Approx 1.5hour+Q&A
Speaker: Tahmina Pearsall & Nick Bradshaw

[CLICK HERE TO REGISTER](#)

Email: secretary@tahminapearsall.com
Note: NO FEE IS REQUIRED

Dear Practitioner,

glaucoma pathways you are invited to join Ms Tahmina Pearsall, Consultant Ophthalmologist at East Surrey Hospital and Nicholas Bradshaw the Local Eye Health Network Chair for Surrey & Sussex for the second in a series of CET events.

This LIVE CET event explores visual fields in relation to glaucoma with clinical problem-solving and case discussion. It is worth 1 CET point with a Q&A at the end.

Monday 30th November @ 19:30

We look forward to your participation and feedback.